

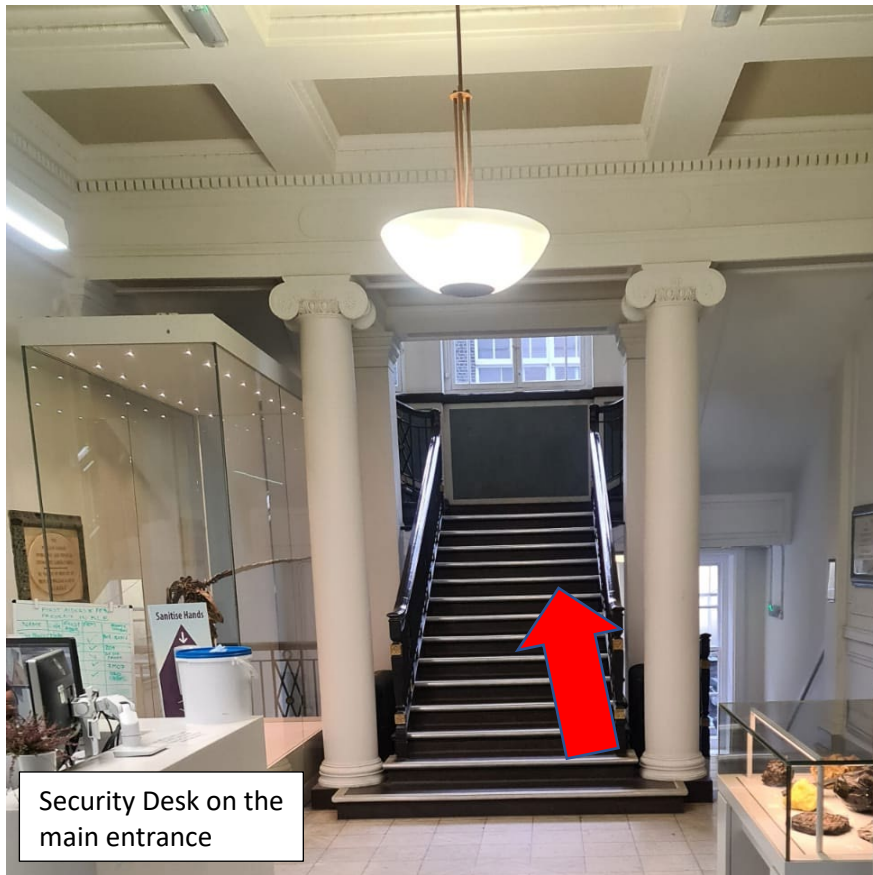
How to get to Jawwad's Office and the student offices in the Kathleen Longsdale Building [Gower Pl, London WC1E 6BT]

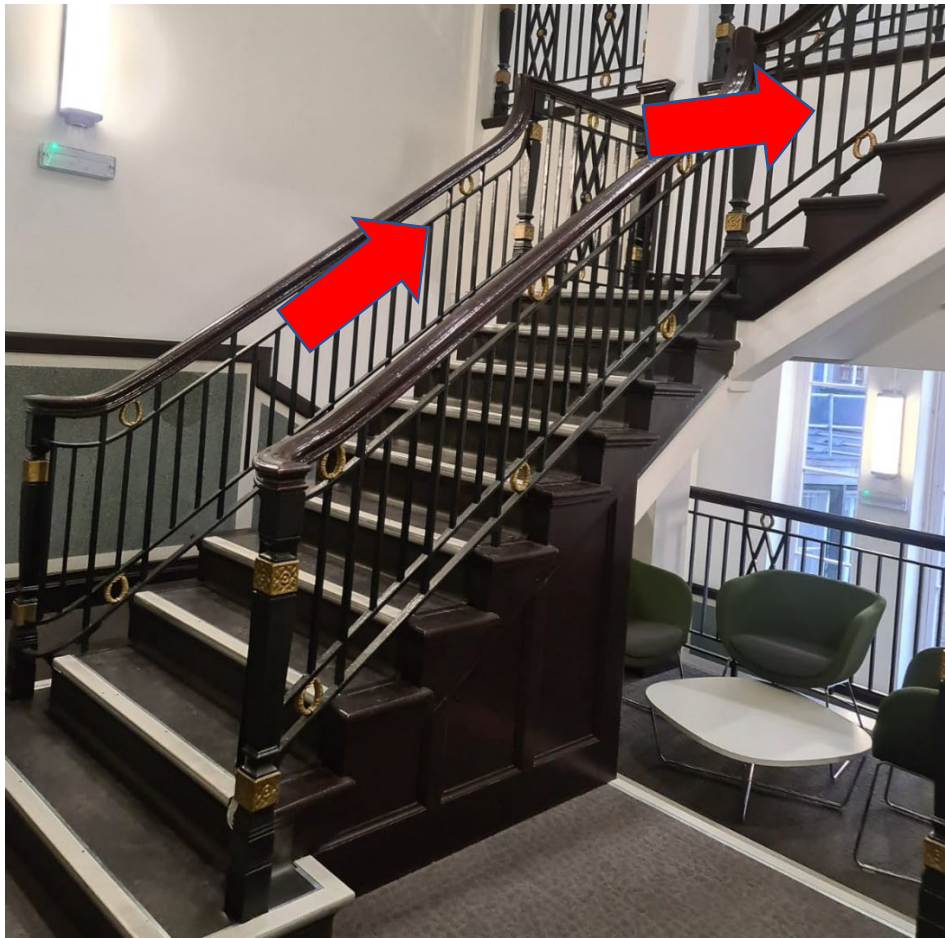
We are on Gower Place;

<https://www.google.com/maps/place/Kathleen+Lonsdale+Building/@51.5249323,-0.1349599,17.49z/data=!4m12!1m6!3m5!1s0x0:0x96dd8a0d33f959f7!2sKathleen+Lonsdale+Building!8m2!3d51.5254251!4d-0.1342503!3m4!1s0x0:0x96dd8a0d33f959f7!8m2!3d51.5254251!4d-0.1342503>

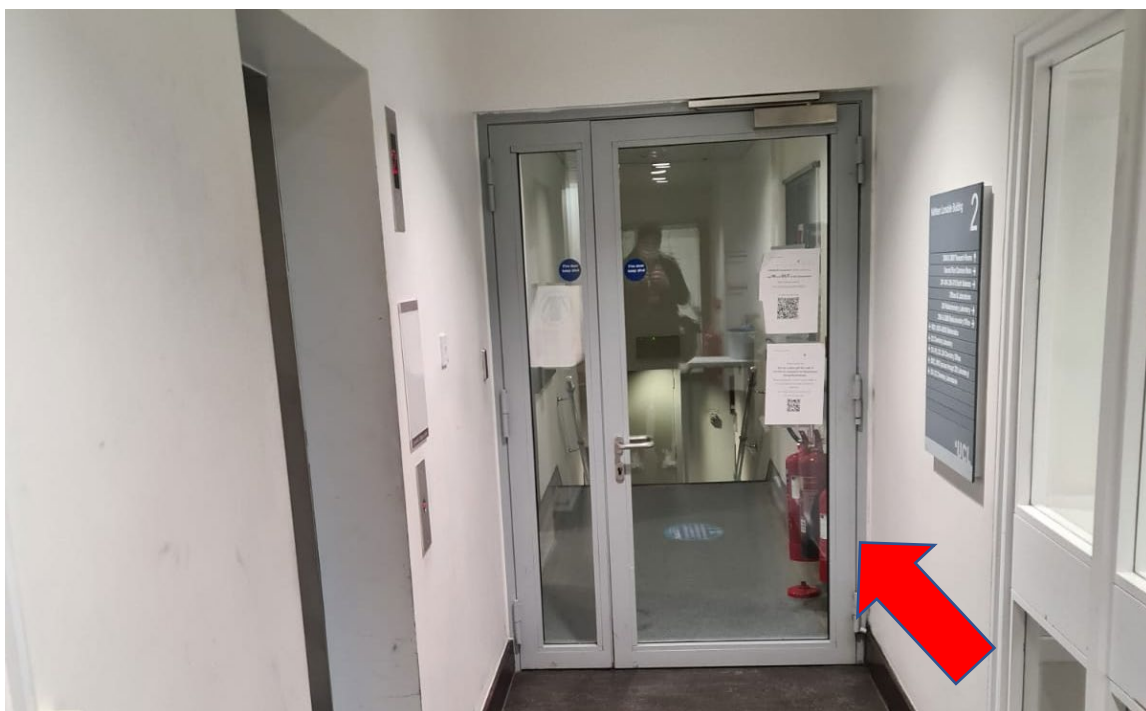


1. From the street, go up the stairs to the main entrance
2. When you arrive, you can call us and we will come down. However if you can alert the security guard on the front desk, they might let you in and direct you to our offices on second floor.
3. You can get the lift to the second floor or walk up the stairs until you reach the second floor.









4. When you get outside this door you are on the second floor and you can ring us and we will let you into this corridor.



5. My office is room 219 on the corridor. Student offices are also on the same corridor